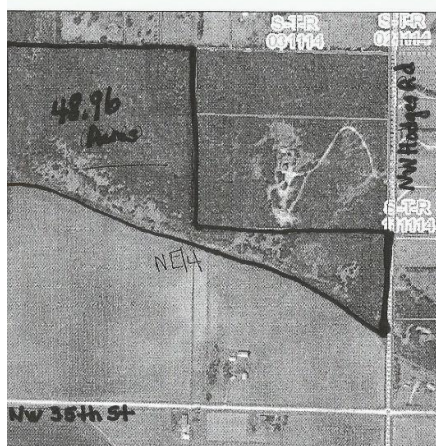


AUCTION
SUNDAY, FEBRUARY 18, 2018
1:00 PM
JUSTNW OF CORNER OF 35TH & HODGES ROAD, ONE MILE EAST OF SILVER LAKE,
KANSAS ON 35TH.

REAL ESTATE

**48.76 ACRES-SHAWNEE COUNTY KANSAS LOCATED IN NE ¼ S10-T11-R14, SHAWNEE COUNTY
KANSAS**



This tract is along the hillside overlooking the Kansas River Valley. The property is tree covered and could be used as a hunting get away or excellent building sites. Long Legal description available upon request. Buyer to pay 10 (Ten) % down with balance due on or before March 16, 2018. STATEMENTS MADE DAY OF AUCTION TAKES PRECEDENCE OVER ANY OTHER INFORMATION. Contact Vern Gannon Broker/Auctioneer, Gannon Real Estate & Auctions 785-770-0066 with any additional questions.

PERSONAL PROPERTY (NO SMALL ITEMS, BE ON TIME!).

1985 Cutlass Supreme, 2-door (running); 4020 John Deere diesel tractor (has not ran for a while); Antique John Deere GP tractor (rear steel); 24' tandem axle dove tail implement trailer (bumper hitch); triple axle 24' implement trailer; IH Loadstar 1600 dump truck; wagon running gear with mounted tank; moving van storage trailer; older GMC truck; hydraulic truck blade; hydraulic grapple bucket; small trailer with pump; metal gates; used corrugated tin; good utility poles; 4X4 cross arms. Truck toolbox; iron wheel wheelbarrow; double tubs; old box wagon; tires & wheels; miscellaneous iron.

BRADLEY E. TOLLEFSON ESTATE

GANNON REAL ESTATE AND AUCTIONS
VERN GANNON AUCTIONEER/BROKER
785-770-0066 MANHATTAN, KANSAS 785-539-2316
www.gannonauctions.com

